

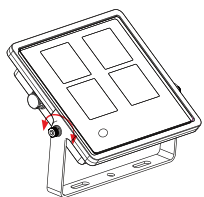
## INSTALLATION GUIDE

### Applications:

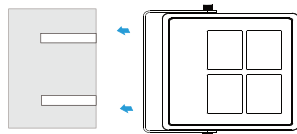
Decorative lights, tree's and facade uplighting, wall lighting, amusements parks and recreation areas.

### Installation Method:

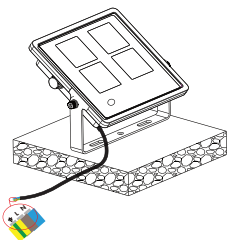
1. Unbox the light and adjust the bracket using hex-key(not included) :



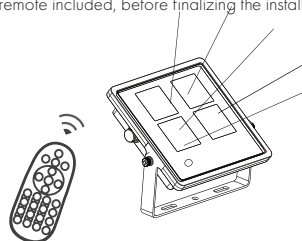
2. Measure holes location on the wall / ground and drill out holes per available bolt's size. Secure the lamp to the surface with expansion bolts.



3. Connect the light 230V AC supply using waterproof connectors (connector not included) to prevent water damage or a risk of electrical shock.



4. Switch mains power ON and test if light operates properly, using remote included, before finalizing the installation.



### Technical Specification

Input Voltage: 220V AC 50Hz

Watts: 36

LED Chip: 3 in 1 RGB

CCT: RGB

Control Method: 24-Key RF Remote

Lumens: 368LM (Red - 12W) / 1060LM (Green - 12W)

155LM (Blue - 12W) / 1500LM (Cool/White - 36W)

Beam Angle : 70

PF: >0.9

Ingress Protection: IP66

Lifespan: 30000 Hours

Warranty: 2 Years

### Remote Control Specification

Remote Control Distance: 6-8m

Dimming : 15 levels

Brightness: 10% - 100%

Color: 16 static colours

Modes: Flash/Strobe/Fade/Smooth

Power: 2x AAA batteries

### Installation and Usage






Ambient Temp: -30C - +45C

Storage Temp: -40C - +70C

Relative Humidity: 10-95%

Atmosphere Pressure: 80-106KPa

### Remote Operations

Red 	Green 	Blue 
Orange 	Light Green 	Dark Blue 
Light Orange 	Cyan 	Dark Purple 
Amber 	Sea Blue 	Pink 
Yellow 	Light Blue 	Purple 
Cool White 		



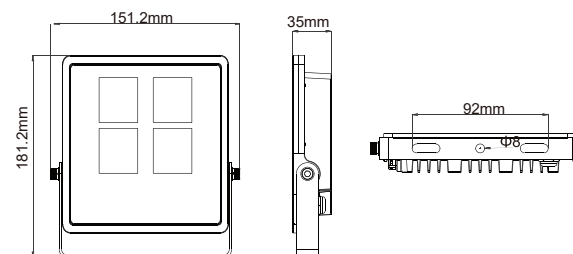
Each colour's/mode's brightness can be adjusted



using up/down arrows.



### Product Size



### Caution notes, trouble shooting and warranty information:

1. Not suitable for dimmable circuits.
2. This light should be installed by a professional electrical contractor.
3. Always switch off mains power before fitting, servicing or moving location of the lamp.
4. All LED luminaires run hot. It is installers responsibility to consider fire risk and take appropriate precautions.
5. Keep a distance of at least 100mm between the lamp and surrounding obstacles to ensure good heat-dissipation, and safety.
6. Ensure that the earth wire is properly connected.
7. Remove batteries from the remote control if not in use for a long time, to prevent remote damage or corrosion.
8. If remote is not responding, please check if batteries are not gone flat or expired.
9. Pay attention to polarity when replacing batteries.
10. Lumeno provides 2 years warranty for this product, starting on the date of purchase and is only valid if installed in accordance with instructions provided and local regulations. Please refer to Lumeno warranty terms, available online for details.
11. This lamp contains no serviceable parts and therefore any tampering will render warranty null and void.