

- High Power Multi-Line Integrated EPISTAR 2835 SMD Chip
- Unique - Slim, stylish shell design
- **NEMA SENSOR INCLUDED**
- High quality powder-coated external finish
- Low power consumption
- Long Lifespan of over 35K hours - L70 Rated
- No start-up time, no flickering
- DOB (Driver on Board)
- Stainless-steel, non-corrosive screws
- Beam Angle of 60° x 150°
- Causes no electromagnetic interference (CE, EMC)
- **Complete with Corner/Wall Bracket**
- Available in 4000K and 2000K (SON Replacement)
- 55/65mm outreach entry



LED STREET LAMPS - VIBE SERIES

DOB DESIGN STREET LAMPS WITH BUILT IN NEMA PHOTOCELL

VIBE Lumeno LED Street Light is a compact, lightweight yet powerful solution for outdoor illumination. It adopts cost effective DOB design, with dedicated build in driver. Slim Line design body, made out of high quality anodised aluminium with powder coated surface. Lamp's structural shell has been designed with a side entry for street poles, taking 55mm (50W model) or 65mm Ø outreach (100W-150W). VIBE Street Light has a versatile mounting options as it can be mounted on a street light poles with an extra angle adapter, alternatively walls or corners using bracket supplied-complete with the lamp. Lumeno LED Street Light offers a wide field of applications including both domestic and commercial sites. As a mini street light VIBE can be a great accessory as an amenity light for a private house as well as for lighting up driveways, sheds or warehouses.



PRODUCT FEATURES & ACCESSORIES :



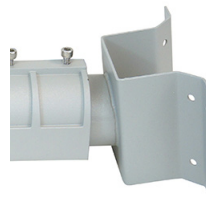
Nema socket attached to lamp's body



Nema photocell included



Photocell Dummy Shorting Cap LM-SLV-DM



Complete with Wall/Corner bracket



Pole-top adjustable adapter LM-SLV-PB

Ordering Codes :

Model number	Colour Temperature (K)	Colour	SENSOR	Brightness	TripleE
LM-SLV50	4000K	Natural White	NEMA PHOTOCELL	4153 LM	LIG80419
LM-SLV50-SON	2000K	Amber White (SON)		3274 LM	N/A
LM-SLV100	4000K	Natural White		10023 LM	LIG80420
LM-SLV100-SON	2000K	Amber White (SON)		8210 LM	N/A
LM-SLV150	4000K	Natural White		15046 LM	N/A
LM-SLV150-SON	2000K	Amber White (SON)		13200 LM	N/A
LM-SLV-DM	Shorting Cap, Dummy photocell				
LM-SLV-PB	SLV 100-150 Pole - top adjustable bracket				
LM-SLV-PB50	SLV50 Pole-top adjustable bracket				



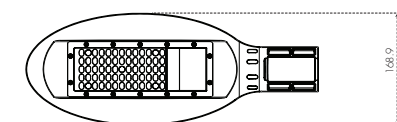
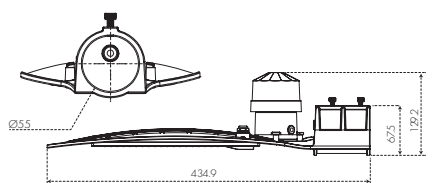
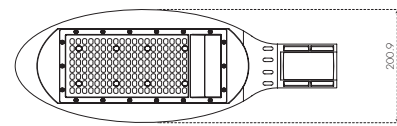
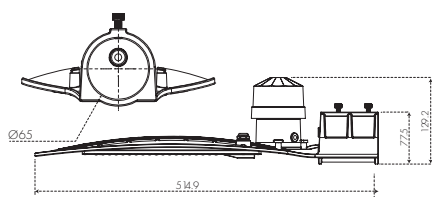
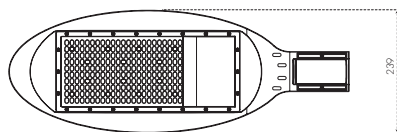
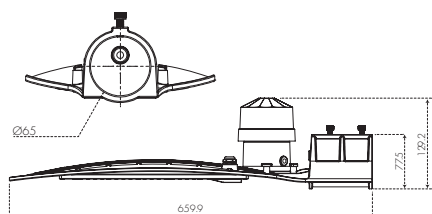
Fin shaped aluminum body

Good airflow limiting high elevation wind vibrations.
Naturally heat dissipating structure, prolonging lamps lifespan.



Rain water directed flow

Reinforced bracket's base with top ribs directing rain towards drainage holes, preventing water gattering on top of the lamp.



IP66 Weather proof

Fin shaped body with drainage channels and holes



Ready for Installation

Vibe street lamps come complete with wall/corner bracket covering most installation options for amenity lighting.



Long lifespan

Thermal stability and non-electrilit capacitor DOB driver.
Guaranteed stability and performance - 50000 hours @ LM70



High lumen Output

DOB design with stable 100LM/W performance, low-cost solution

VIBE

LED STREET LAMPS BY : LUMENO