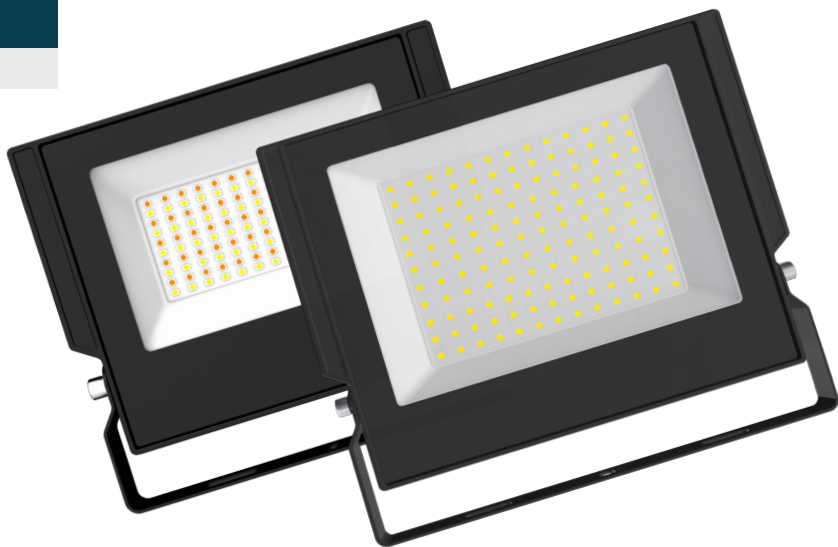


## PRIME SERIES DOB LED FLOOD LAMPS

- Multi-Line Integrated EPISTAR 2835 Matrix as light source
- Slim design body
- Full range of led flood lights : 10Watt - 100 Watt
- High quality powder-coated external finish
- Low power consumption with high power factor
- IP66 Waterproof with anti-condensation vapor valve
- Built in surge protection
- Long Lifespan of over 25K hours - L70 Rated
- DOB Design, Driveless Flood Lamp
- Stainless-steel, non-corrosive screws
- Beam Angle of over 100°
- Causes no electromagnetic interference (CE, EMC)



## LED FLOOD LAMPS - PRIME SERIES

DOB DESIGN FLOOD LAMPS WITH ANTI-CONDENSATION VAPOUR-VALVE

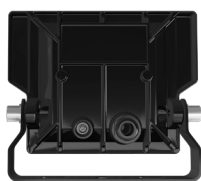


PRIME Led flood lamps are a budget solution for external area flood lighting. Designers intentions were to minimize production and material cost without sacrificing lifespan and DOB performance. It inherits features from premium Stealth range in the form of vapor valve. Minimalistic design with return to roots for flood lighting shell design. PRIME series of LED flood lamps come with a reinforced bracket for increased longevity and secure installation.

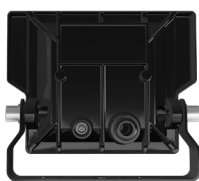
# PRIME

LED FLOOD LAMP SERIES BY : LUMENO

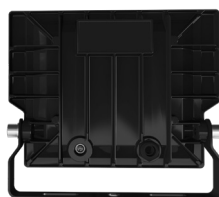
LM-FL10P-V5



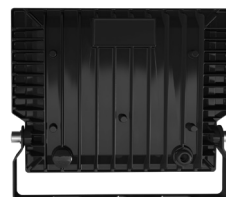
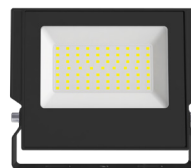
LM-FL20P-V5



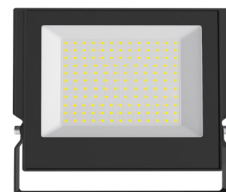
LM-FL30P-V5



LM-FL50P-V5



LM-FL100P-V5



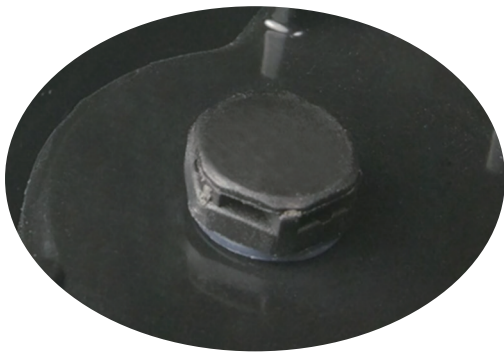
## Ordering Codes :

Code	Power	Light Output	Size	Colour Available	Body Finish	UI	Voltage
LM-FL10P-V5	10W	>850LM	120x105x28.5mm	4000-4500K (Natural-White)	Black	NA	200-245VAC
LM-FL20P-V5	20W	>1850LM	160x135x28.5mm	4000-4500K (Natural White)	Black	NA	
LM-FL20P-CCT-V5	20W	>1950LM		3000K-4000K-6000K	Black / White	IR Remote	
LM-FL30P-V5	30W	>2750LM		4000-4500K (Natural White)	Black	NA	
LM-FL30P-CCT-V5	30W	>2900LM		3000K-4000K-6000K	Black / White	IR Remote	
LM-FL50P-V5	50W	>4500LM	200x165x28.5mm	4000-4500K (Natural White)	Black	NA	
LM-FL50P-CCT-V5	50W	>4600LM		3000K-4000K-6000K	Black / White	IR Remote	
LM-FL100P-V5	100W	>9500LM		4000-4500K (Natural White)	Black	NA	
LM-FL100P-CCT-V5	100W	>9600LM	270x217x28.5mm	3000K-4000K-6000K	Black / White	IR Remote	



## CCT Selectable with IR Remote

Full range of CCT colour selectable flood lamps available

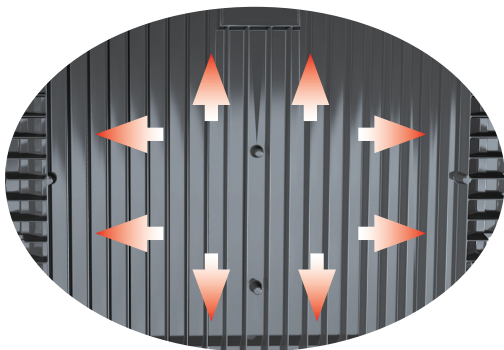
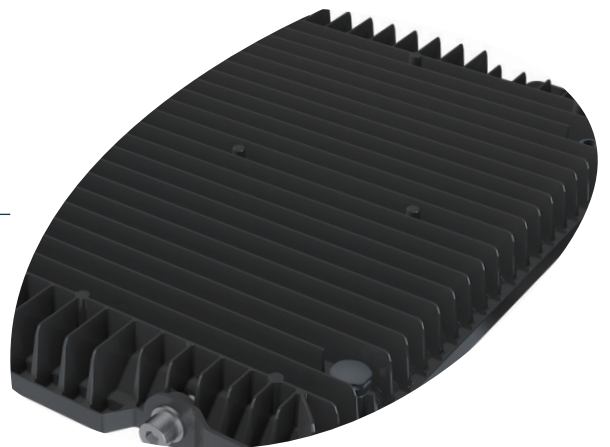


## Vapour Valve

IP66 solution combined with inherited Stealth's valve releasing condensation.

## Aviation Die-Cast Aluminium

Corrosion and rust resistant with efficient cooling properties. Durable and lasting.



## Good Heat Dissipation

Fin design with highly efficient heat dissipation. Linear convection cooling.