

VANTAGE SERIES PHOTOCELL LED WALL LIGHTS

- 40 Watt & 60 Watt LED wall lights
- EPISTAR 2835 Matrix as light source
- Compact modern design,
- Integrated, detachable **Photocell** sensor
- High quality powder-coated external finish
- **CCT Selectable** light output **2000K** - 3000K- 4000K
- IP65 Waterproof complete with Rubber grommets
- Isolated driver - no power leak via sensor
- High lumen performance of over 125LM/Watt
- Wall insulation disk gasket
- Beam Angle of over 100°
- Soft, diffused light output



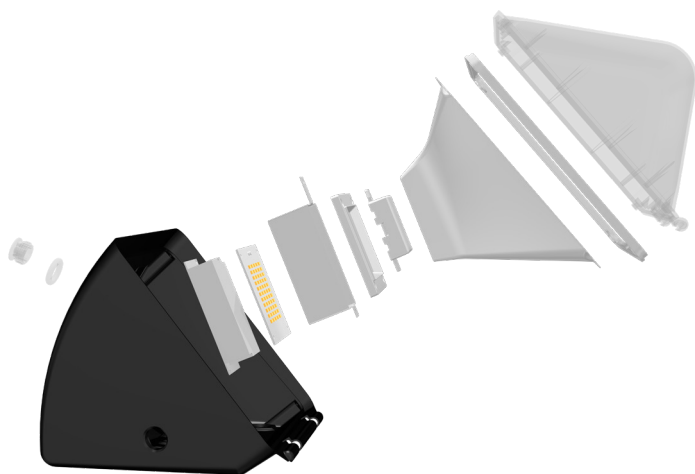
LED WALL LIGHT - VANTAGE SERIES

PHOTOCELL WAREHOUSE LED WALL LIGHT WITH CCT SELECTOR SWITCH

VANTAGE LED Wall Light series is a modern design of an external wall-pack light. Using high quality SMD2835 chips providing 3 distinct colour temperatures all in one luminaire. Adapting selector switch developed for Exceed series, providing an on-site choice of light colour depending on requirements, customer preferences or local regulations. With LUMENO standardized **SON colour**, MWV40 and MWV60 are a great choice where light pollution is a problem. These compact and modern lights provide a staggering light output of over **125LM/W**, becoming a viable, more stylish alternative to bulky flood lamps. VANTAGE CCT Wall Lights have been equipped with LUMENO in-house designed LED supply circuit and high-quality photocell sensor with option for disconnection for manual light control. Ideal solution for warehouse perimeter lighting.



Voltage	100-265VAC
Frequency Range	50-60Hz
Power Factor	>0.9
Photocell	Integrated, 20Lux threshold
Wiring	Internal WAGO Connectors
Angle of light	90 °
Colour Temperature	Selector switch: 2000K /3000K / 4000K
Lumen performance	>125LM/W
Working Temperature	-25°C ~ +45°C
Front Cover	ABS Plastic
Body finish	Powder coated Carbon Gray
Body Material	Aluminium die-cast
Standard working temperature	70°C
Accessories	Rubber grommet, rubber insulation pad
Warranty	3 years



VANTAGE

LED WALL LIGHTS SERIES BY: LUMENO

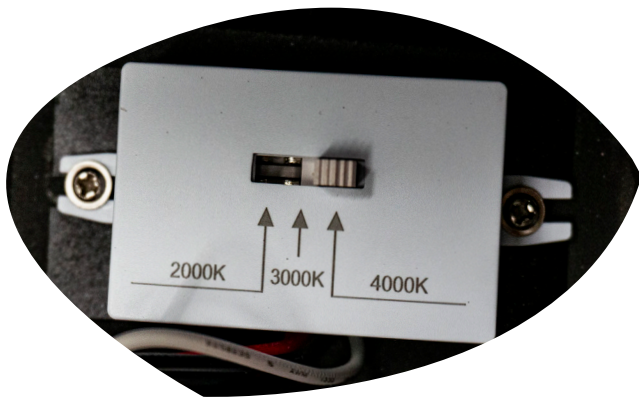
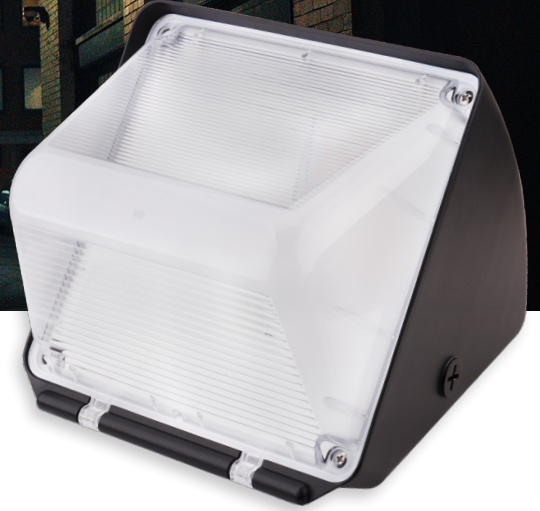
Ordering Codes :

Code	Nom. P(W)	Eff	Nom Flux	Light Output	Driver	Colour Temperature	Warranty	IP	Angle
LM-MWV40CCT	40.1 Watt	>125 LM/W	5178	>5100LM	100-265VAC	2000K (SON)	3 Years	IP65	90°
LM-MWV60CCT	60.4 Watt	>125 LM/W	7468	>7400LM		3000K (Warm White) 4000K (Natural White)			



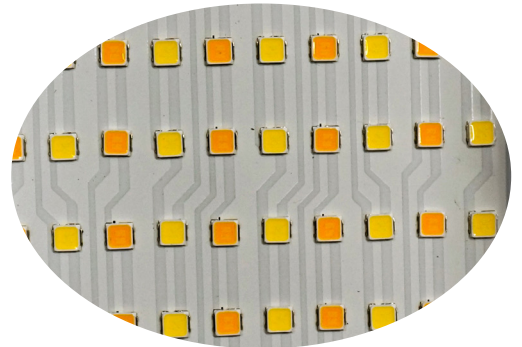
Compact & secure

Great alternative to standard flood lights for industrial intallations



Simple wiring and setup

WAGO quick connectors, easy setup CCT selector switch



Two-colour LED chips

Seperate colour LED's with ballanced power mixing keeping fixed wattage, regard-
less of colour selected (40W or 60W).

CCT CHANGING



SON



WW



NW



IP65 Weather proof

Fully sealed shell with cable grommet & insulation gasket



Simple installation

Easy step-by-step installation with no fuss wiring



High Lumen Output

Internal driver with over 125LM/W sustainable performance